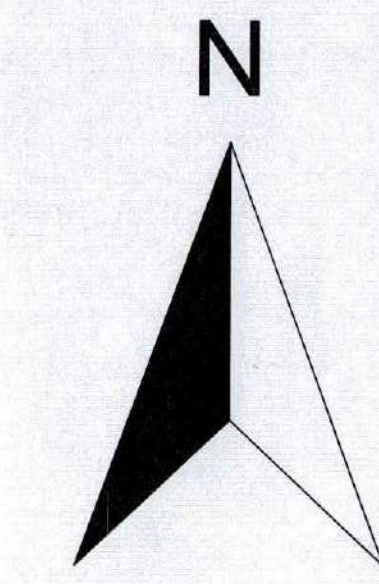
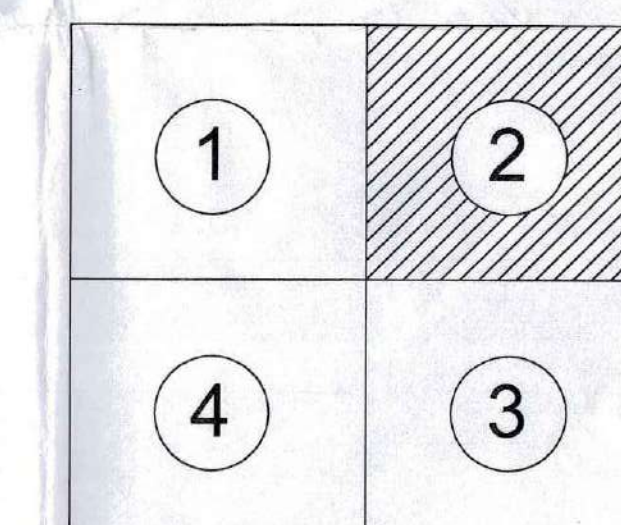


**DEVELOPMENT PLAN OF WASHIM
(2nd REVISED)
DIST. - WASHIM
PROPOSED LAND USE PLAN
(SANCTIONED UNDER SECTION 31(1) OF THE M.R.&T.P.ACT-1966)**



SCALE :- 1 : 5000

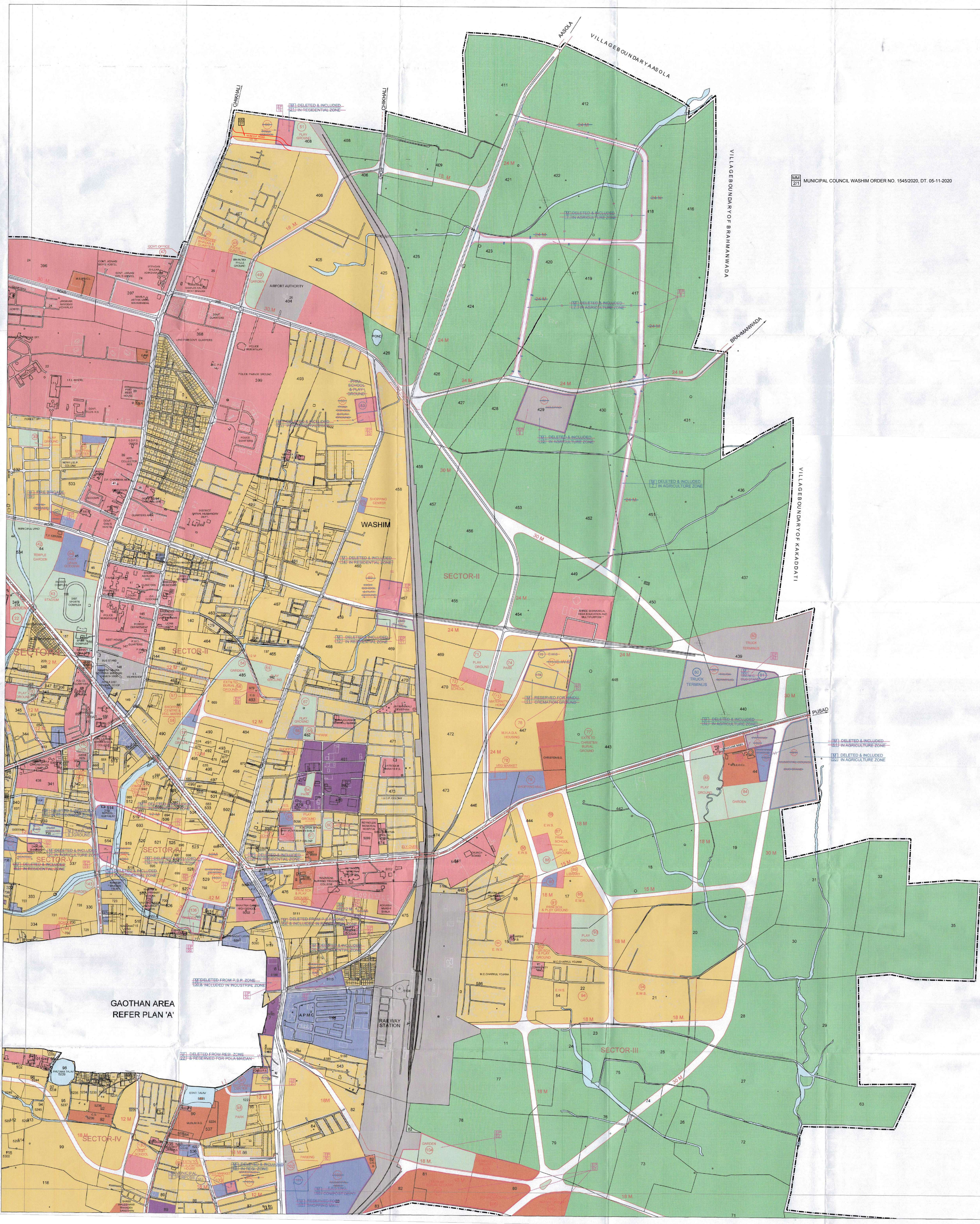


ABBREVIATIONS

A.P.M.C.	AGRICULTURE PRODUCE MARKET COMMITTEE
B.G.	BURIAL GROUND
C.G.	CREMATION GROUND
E.S.R.	ELEVATED SERVICE RESERVOIR
HOSP.	HOSPITAL
H.S.	HIGH SCHOOL
P.S.	PRIMARY SCHOOL
LIB.	LIBRARY
S.C.	SHOPPING COMPLEX
OFF.	OFFICE
P.P.	PETROL PUMP
P.L.	PUBLIC LATRINE

REFERENCES :

- MUNICIPAL LIMIT
- VILLAGE BOUNDARY
- CONGESTED AREA LIMIT
- SECTOR BOUNDARY
- RESIDENTIAL
- COMMERCIAL
- INDUSTRIAL
- RECREATIONAL ACTIVITIES / OPEN SPACE
- PUBLIC & SEMI PUB LIC
- TRANSPORT & COMMUNICATION
- WATER BODIES
- AGRICULTURE
- PUBLIC UTILITY
- PROPOSED ROADS
- MODIFICATIONS MADE BY APPOINTED OFFICER U/S 28(4) OF M.R. & T.P. ACT 1966
- SUBSTANTIAL MODIFICATION REPUBLISHED U/S 31(1) OF MR & TP ACT 1966 VIDE GOVERNMENT URBAN DEVELOPEMENT DEPARTMENT NOTIFICATION NO. TPS NO.4115/179/CR-206(B)/2015/UD-30 DATED - 12 th September, 2016
- MODIFICATION MADE AT GOVT. LEVEL WHILE SANCTIONING THE DEVELOPEMENT PLAN. SANCTIONED UNDER URBAN DEVELOPEMENT DEPARTMENT GOVERNMENT OF MAHARASHTRA NOTIFICATION NO. TPS NO. 4115/179/CR-206(A)/2015/UD-30 DATED 12th september,2016



MUNICIPAL COUNCIL WASHIM ORDER NO. 1545/2020, DT. 05-11-2020

Joint Secretary
Urban Development Dept
Maharashtra Mumbai 32

JOINT DIRECTOR OF TOWN
PLANNING AMARAVATI DIVISION
AMARAVATI

Assistant Director of
Town Planning, Washim