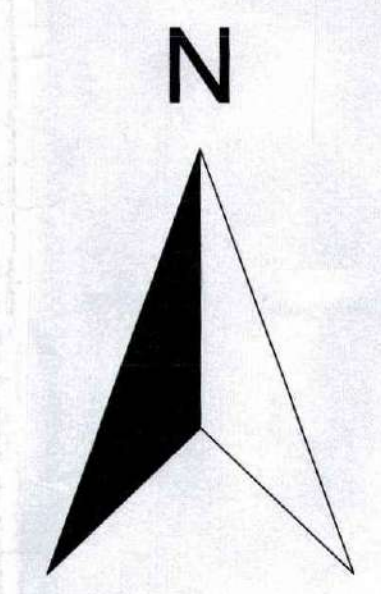
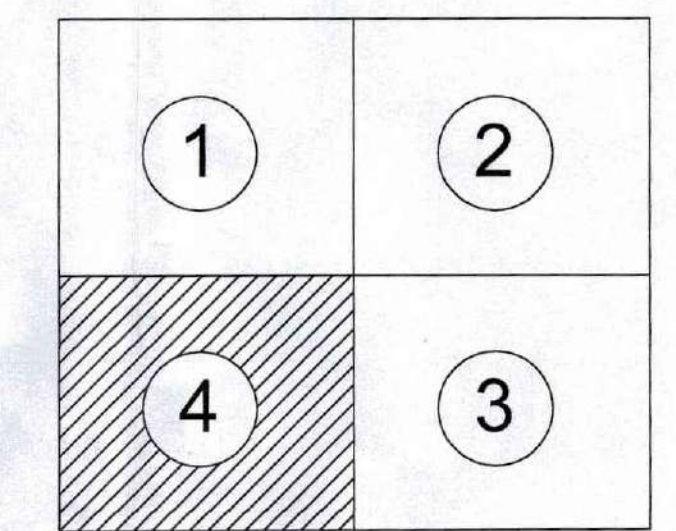


**DEVELOPMENT PLAN OF WASHIM  
(2<sup>nd</sup> REVISED)  
DIST. - WASHIM  
PROPOSED LAND USE PLAN  
(SANCTIONED UNDER SECTION 31(1) OF THE M.R.&T.P.ACT-1966)**



SCALE :- 1 : 5000

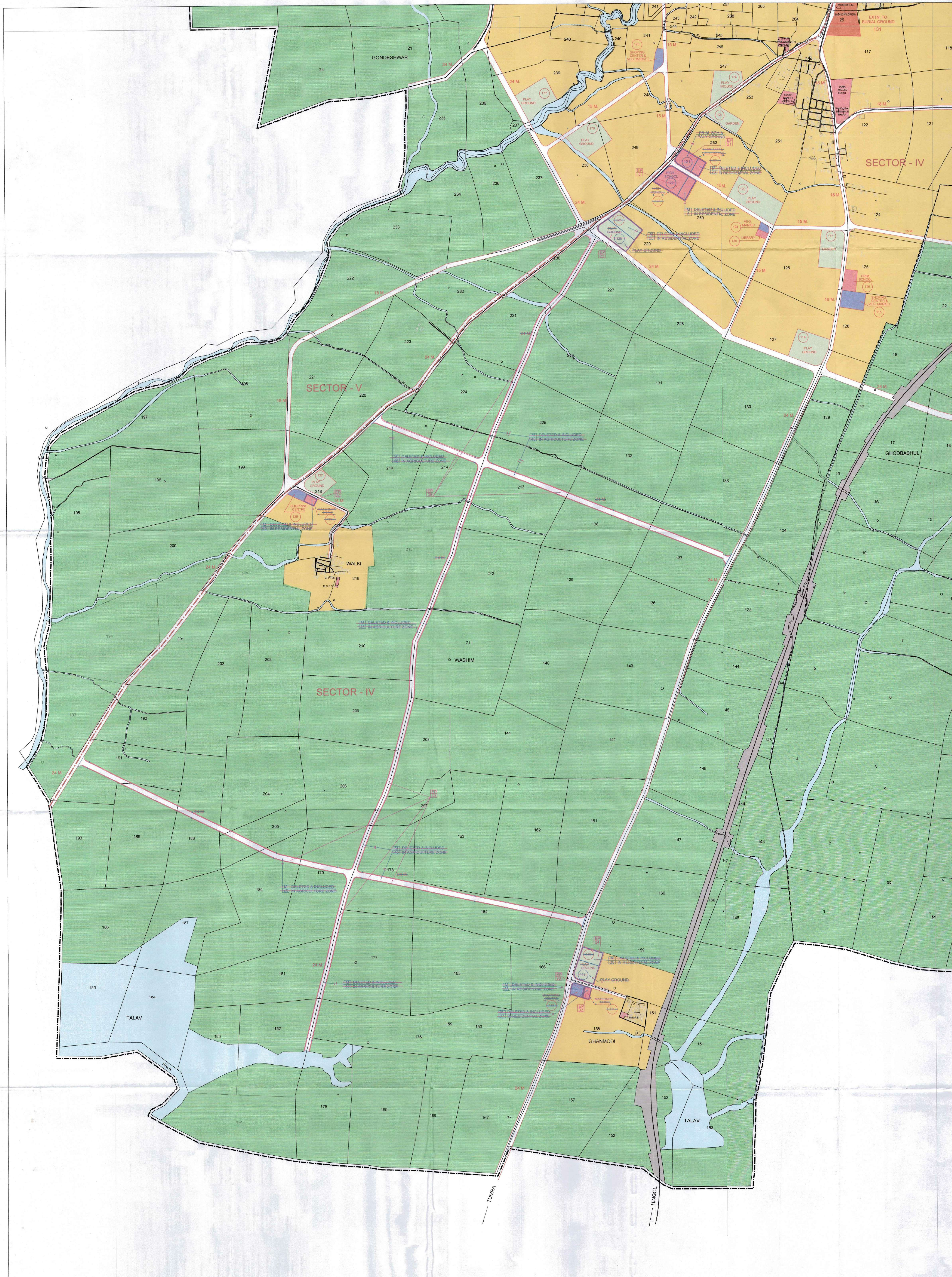


**ABBREVIATIONS**

A.P.M.C.	AGRICULTURE PRODUCE MARKET COMMITTEE
B.G.	BURIAL GROUND
C.G.	CREMATION GROUND
E.S.R.	ELEVATED SERVICE RESERVOIR
HOSP.	HOSPITAL
H.S.	HIGH SCHOOL
P.S.	PRIMARY SCHOOL
LIB.	LIBRARY
S.C.	SHOPPING COMPLEX
OFF.	OFFICE
P.P.	PETROL PUMP
P.L.	PUBLIC LATRINE

**REFERENCES :**

	MUNICIPAL LIMIT
	VILLAGE BOUNDARY
	CONGESTED AREA LIMIT
	SECTOR BOUNDARY
	RESIDENTIAL
	COMMERCIAL
	INDUSTRIAL
	RECREATIONAL ACTIVITIES / OPEN SPACE
	PUBLIC & SEMI PUB LIC
	TRANSPORT & COMMUNICATION
	WATER BODIES
	AGRICULTURE
	PUBLIC UTILITY
	PROPOSED ROADS
	MODIFICATIONS MADE BY APPOINTED OFFICER UIS 28(4) OF M.R. & T.P. ACT 1966
	SUBSTANTIAL MODIFICATION REPUBLISHED UIS 31(1) OF MR & TP ACT 1966 VIDE GOVERNMENT URBAN DEVELOPMENT DEPARTMENT NOTIFICATION NO. TPS NO. 4115/179/CR-206(B)/2015/UD-30 DATED - 12th September, 2016
	MODIFICATION MADE AT GOVT. LEVEL WHILE SANCTIONING THE DEVELOPMENT PLAN SANCTIONED UNDER URBAN DEVELOPEMENT DEPARTMENT GOVERNMENT OF MAHARASHTRA NOTIFICATION NO. TPS NO. 4115/179/CR-206(A)/2015/UD-30 DATED 12th september, 2016



*[Signature]*  
Assistant Director of  
Town Planning, Washim

JOINT DIRECTOR OF TOWN  
PLANNING AMARAVATI DIVISION  
AMARAVATI